

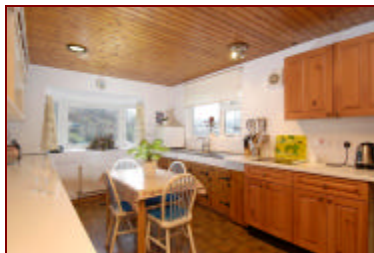
WATERSIDE HOMES DEPARTMENT

'CREEK VIEW', NOSS MAYO

A well positioned detached village house with superb estuary views, ideal as a holiday retreat or low maintenance main home.



View from property



A much loved home for many years, Creek View has more recently proven itself to be a successful holiday let.

Located high up in the village, the views from the property itself are quite stunning; a perfect vantage point from which to watch people messing about in boats.

The twin villages of Newton Ferrers and Noss Mayo enjoy a delightful riverside setting on the wooded slopes of the estuary of the River Yealm. This sheltered, deep water harbour is much favoured by yachtsmen and lies within a truly beautiful valley in the unspoilt South Hams countryside, an Area of Outstanding Natural Beauty and Special Area of Conservation. The villages share a number of facilities including a post office, pharmacy, traditional butcher, Co-operative store, three good public houses, two churches, yacht club with bistro, tea-rooms and good Primary School. The holiday retreats and full time residences have found a comfortable balance that propel this thriving community with countless clubs and

activities available for the more sociable and active, or long picturesque walks along the South West Coast Path for those that simply want to enjoy the peace and tranquility.

Bus services run to Plymouth city centre which is within easy commuting distance. The main route from Plymouth to Exeter (A38/M5 Devon Expressway) is only a few miles away. Intercity trains run daily from Plymouth to Paddington. Plymouth Airport & the Continental Ferryport are also easily accessible. All give superb access to the rest of the country, combined with living in one of the most beautiful riverside locations on the south coast.



Creek View is being offered for sale at a guide price of £415,000. Further details are available at www.luscombemaye.com or contact us on:-



Tel: 01752 872417

E-mail: newtonferrers@luscombemaye.com